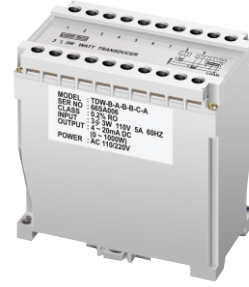


## FEATURES

- Dual Aux. Power 110/220V AC
- High Accuracy 0.2% RO at 23°C± 5°C
- High Dielectric Strength 2.6KV AC / Min,  
Between Input / Output/ Power Case
- ABS Plastic Case, DIN Rail or Wall Mounting



\*Preliminary data subject to change.

**ORDERING :** TDPFA — □ — □ — □ — □ — □ — □ 1 Phase 2 wire  
 TDPFB — □ — □ — □ — □ — □ — □ 3 Phase 3 wire  
 TDPFC — □ — □ — □ — □ — □ — □ 3 Phase 4 wire

Circuit		I/P Voltage		I/P Current		Frequency		Output		Aux. Power		
A	1	2 W	A	110V	A	1A	A	50Hz	A	0~10mA DC	A	AC 110/220V
B	3	3 W	B	220V	B	5A	B	60Hz	B	0~20mA DC		(Dual Power)
C	3	4 W							C	4~20mA DC	C	DC 24V
									D	0~5V DC	D	DC 110V
									E	1~5V DC	E	DC 125V
									F	0~10V DC	N	* Self-Power Mode
Y	Other	Y	Other	Y	Other				Y	Other	Y	Other

### 3 4W Voltage Line-Neutral.

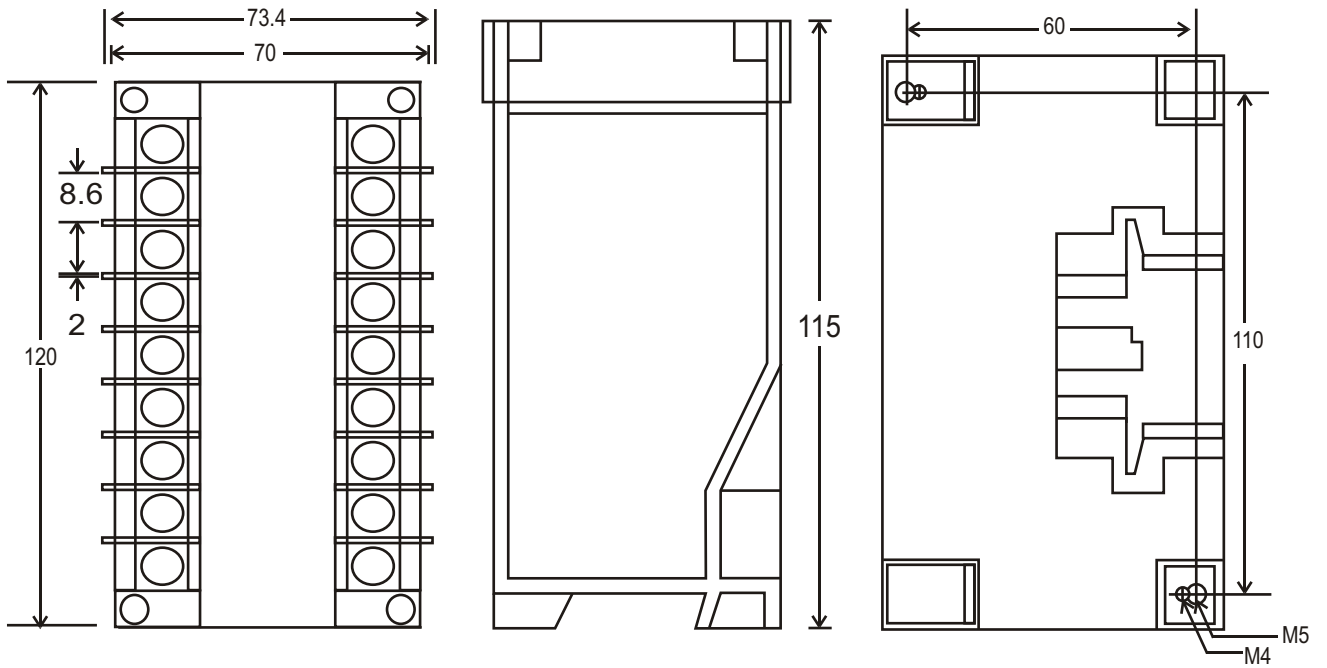
## SPECIFICATION

<b>Accuracy</b>	: 0.2%RO at 23°C±5°C (Self-Power Mode 0.25%RO at 23°C±5°C).
<b>Input Range</b>	: Normal Voltage 110V, Effective 85~150V. Normal Voltage 220V, Effective Range 160~300V. Normal Current 5A, Effective Range 0~7.5A. Normal Current 1A, Effective Range 0~1.5A.
<b>Input Burden</b>	: 0.1VA/60Hz at 150V AC; Self-Power Mode 2VA at 150V AC.
<b>Frequency</b>	: 45~70Hz.
<b>Input Over</b>	: Normal AC 110V, Voltage Over 500V Continuous. Self-Power Mode 150V AC Maximum. Normal AC 5A, Current Over 15A Continuous; 50A 10 Sec/Hour; 400A 0.5 Sec/Hour.
<b>Output Load</b>	: DC Current Mode: 10V DC Maximum, DC Voltage Mode: 10mA Maximum.
<b>Output Protection</b>	: Without Damage for Output Open or Short Circuit.
<b>Dielectric Strength</b>	: 2.6KV AC / 1 Min, between Input / Power / Case.
<b>Impulse</b>	: 5KV (1.2X50 S), ANSI C37.90a / 1983. DIN, IEC 255-4, IEC 688-1992 2.5KV -0.25mS/1MHz IEC 801-3 (Ring WAVE).
<b>Common Mode Rejection</b>	: > 120db, 50/60Hz.
<b>Stability</b>	: < 0.2% / Year.
<b>Calibration</b>	: SPAN and ZERO ± 10%.
<b>Response Time &amp; Ripple(p-p)</b>	: 400mS. 0~99%; 0.5% P-P(STD) or Option.
<b>Magnetic Effect</b>	: DIN- IEE688 0.005% Change 10" Center 100A-Turn.
<b>Temperature Coefficient</b>	: 100ppm/°C from 0~60°C; 50ppm/23°C±3°C
<b>Operating Condition</b>	: -10°C ~ +65°C, 20~95% RH Non-Condensed.
<b>Storage Condition</b>	: -40°C ~ +75°C, 20~95% RH Non-Condensed.
<b>Power Supply</b>	: AC or DC ± 20%, 50/60Hz 3VA/AC.
<b>Aux. Power Effect</b>	: < 0.01% / V.
<b>Housing Material</b>	: ABS Plastic, Self-Extinguishing to UL Subject 94 Class V-O. Case IP 50 Snap Mounting On DIN EN 50022-35 Or Surface Mounting. Compliance With IEC 529, BS 5490, Din 40054. Protection Touch-Proof Terminals and Enclosure Meeting Requirements Of VBG4 & VDE 0106 part 100 (Germany).
<b>Mounting</b>	: DIN Rail or Wall Mounting.
<b>Size</b>	: 120 <sup>w</sup> X 115 <sup>h</sup> X 73.4 <sup>l</sup> mm

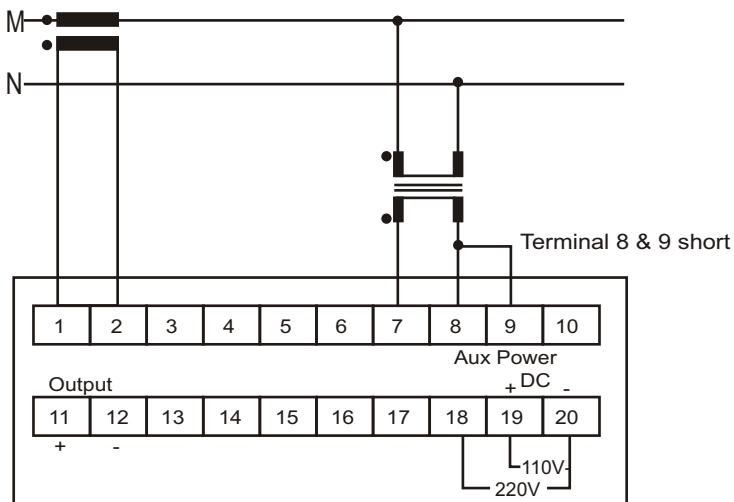
\*Bi-Direction for Power Factor. Example : O/P 4~20mA VS -0.5(C)~1~+0.5(L).

\*Self-Power Mode : Effective Range 85~150V AC, Power Source from V1 Voltage.

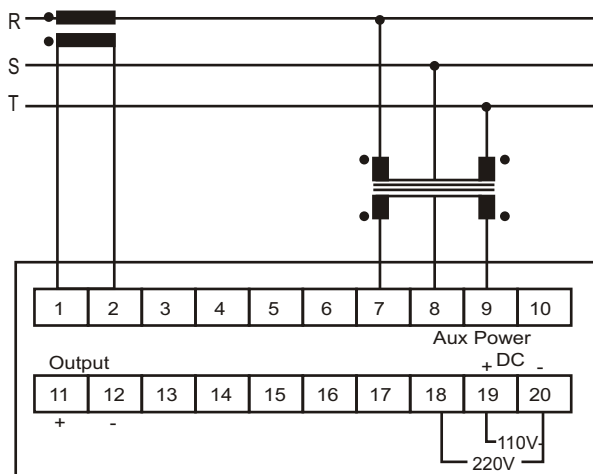
**Outline Dimension : (Unit : mm)**



**1 2W Balance**



**3 3W Balance**



**3 4W Balance**

